

Lune Valley Greenway - Project Updates for Stakeholders October 2023

Welcome to the October 2023 update on Sustrans work to develop a number of multi-user greenway routes in the Lune Valley. The ambition spans the three counties of Lancashire, Cumbria and North Yorkshire and has the potential to transform the active travel network in the area, both in terms of everyday journeys and leisure & tourism. Read on to find out what we've been up to to make these plans a reality.

Lancashire County Council Launch Stage 2 Consultation for Local Cycling & Walking Infrastructure Plans (LCWIPs)

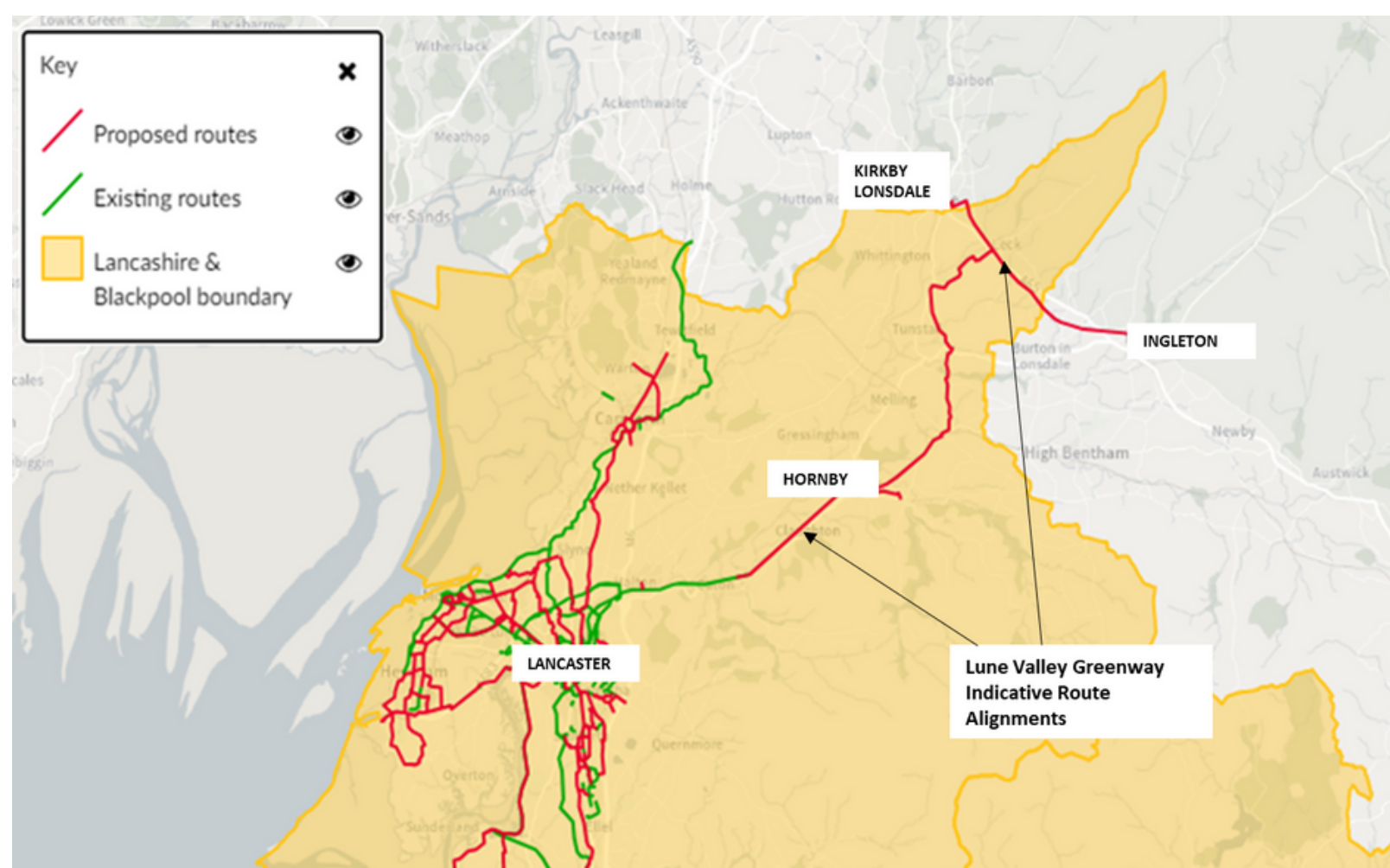
Following feedback from their initial public engagement on the plans last year the council have produced a draft network map of cycling, walking and wheeling networks for Lancashire.

The aspiration to pursue an extension to the Lune Valley Greenway from its existing terminus at Bull Beck through to Kirkby Lonsdale via Hornby, Wray, and Wennington, as well as an east – west route between Kirkby Lonsdale and Ingleton are included on the draft plans.

A survey open to all residents, visitors, workers, businesses, organisations, and councillors in Lancashire is included as part of the engagement exercise. Sustrans would like to request that those who are in support of the aspiration submit comments to the council reflecting this view. If suitable, please share the attached link within your local communities and organisations with a similar request.

Evidencing a high level of support for the aspiration is critical so that the Lune Valley Greenway is formalised in the document that is to be taken forward for County Council cabinet approval this winter.

The benefits of the routes being enshrined in the final document include an increased ability to attract funding for construction and the ability to access the necessary resources within council teams to undertake legal aspects of the project such as public right of way creation.



Please note that the alignment shown on the map is indicative only.

It shows the original aspirational alignment along the former railway line. Discussions with landowners and communities may supersede the alignment displayed on the survey.

[Click here to complete the LCWIP survey](https://lancashire.citizenspace.com/environment-and-planning/lancaster-lcwip-engagement-survey-stage-2/)

Or manually enter the following link into your browser <https://lancashire.citizenspace.com/environment-and-planning/lancaster-lcwip-engagement-survey-stage-2/>

The survey is open until midnight on the 23rd October.

Please get in touch if you are having trouble accessing or completing the survey and we will be happy to help.

Lune Valley Greenway - Project Updates for Stakeholders October 2023

Project Updates

Our Lune Valley projects are split into distinct sections in order to further focus activities related to the greenway creation such as fund assembly, stakeholder engagement, public right of way creation, highways issues, public consultation and design & engineering.

Caton to Bull Beck Improvement Works **(Construction Project)**

Sustrans have finalised designs for a package of improvement works to the existing greenway between Caton and the existing terminus at Bull Beck. The works, funded by a Department for Transport grant, will protect the greenway for future use, enhance the accessibility of the path and improve the route user experience.

The works included in the improvements package are:

- The widening of the narrow access ramp leading to Bull Beck Picnic Site.
- An enhanced layout where the greenway crosses Station Road, Caton to improve safety and flow of users.
- Refresh of access points along the greenway to ensure their compliance with the most recent national level design guidance on accessibility.
- Patch resurfacing along the route totalling 250m fixing protruding tree routes which currently provide a hazard to provide a smooth, sealed surface.
- Enhanced signage promoting a conscientious sharing of the path message.
- Installation of 10 bat and 10 bird boxes to enhance biodiversity.

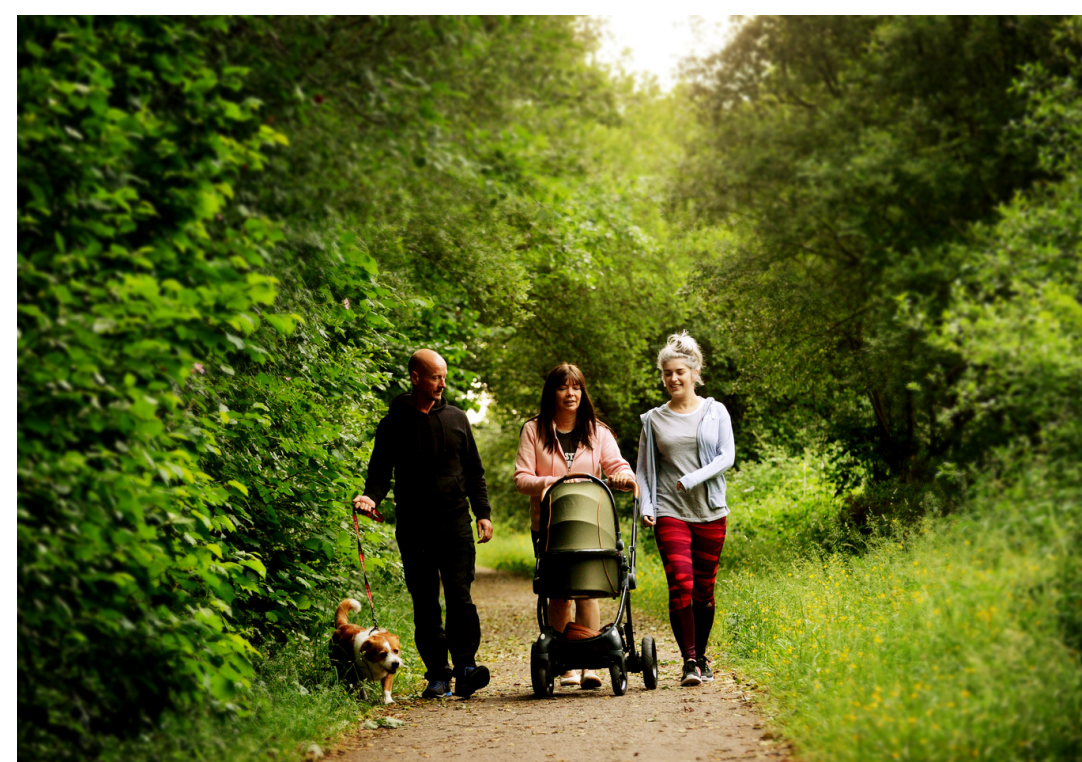
A contractor will be appointed imminently with the works due to begin mid November 2023 lasting 4 weeks. During this period some sections of the path may be temporarily closed to protect route users from construction activity. Further information on the closure is being provided locally.

Bull Beck to Hornby Greenway Extension **(Design Development Project)**

This stretch represents the first step towards extending the existing greenway. The route is proposed to head north east from Bull Beck, roughly following the alignment of the dismantled railway and A683 towards Hornby.

Upon completion, the village of Hornby, the large employment site near Cloughton and Lune Valley Junior Football Club would be directly connected to Lancaster via traffic-free means, offering an enhanced ability to undertake active journeys and access to facilities for many local people.

Sustrans are currently engaged with a number of landowners between Bull Beck and Hornby to develop proposed designs for a safe traffic-free path. This involves our engineers mapping the site, undertaking site walkovers where permitted, participating in internal design workshops, liaising with the highway authority and working alongside our team of ecologists to identify a favoured alignment to discuss further with the landowners.



Lune Valley Greenway - Project Updates for Stakeholders October 2023

Hornby to Wennington Greenway (Design Development Project)

Sustrans are also proposing a link between the villages of Hornby, Wray and Wennington. This section of route would be incredibly beneficial in its own right but would also contribute to becoming part of the longer distance greenway initially looking to reach Hornby.

The project aims to provide a safe traffic-free path which will allow residents to undertake active journeys between a range of local amenities such as the school and swimming pool at Hornby, the garden centre at Wray and the station at Wennington.

Sustrans engineers and ecologists are currently preparing proposed designs for the improvement of Back Lane Bridleway at Wray which will be discussed further with landowners, the local community and the project stakeholder group. Our Network Development team also plan to re-engage with landowners north of Wray for a preliminary discussion about the proposals.

Sustrans have also recently met with the Bentham Line Community Rail Partnership (CRP) to discuss the connection to Wennington Station which will be key in allowing the continuation of journeys to destinations further afield without the need for a car. The CRP are supportive of the aspiration of the greenway and are keen to see accessibility improved at the station and that the local railway heritage is celebrated given that some of the route is proposed to use the former railway line.

Wennington to Kirkby Lonsdale (Route Options Appraisal Project)

This project will aim to complete the link between the lower and central Lune Valley area by connecting Wennington to the proposed Kirkby Lonsdale to Ingleton greenway route. Sustrans will produce a Route Options Appraisal report which will assess a project area of approximately 38km². The report will review the various possibilities for the alignment of the greenway and will provide the basis for approaching landowners for preliminary discussions in future months and years.

Sustrans will undertake collaborative engagement with local communities, councils and organisations during this process to gain an understanding of local context and of which alignments may or may not be particularly viable to take forward.



Kirkby Lonsdale to Cowan Bridge (Design Development Project)

This project represents the first phase of a proposed new greenway route connecting the market towns of Kirkby Lonsdale and Ingleton. The route will link directly into the extension being sought to the existing greenway between Bull Beck and Wennington via Hornby and Wray.

Sustrans have already produced a Route Options Appraisal report for this section and are now actively engaging with a number of landowners between Kirkby Lonsdale (Devil's Bridge) and Cowan Bridge.

Our engineers and ecologists are working towards the preparation of proposed design drawings to seek approval from the various landowners involved. Sustrans are also undertaking internal design workshops to put together a proposal for how the route approaches and passes through Cowan Bridge. As this work progresses, we will be liaising with the highway authority and the local community.

Cowan Bridge to Ingleton (Preliminary Landowner Conversations)

Sustrans plan to open preliminary conversations with landowners between Cowan Bridge and Ingleton in the near future. We will then conduct a route alignment review and begin concept design stage work for this section of the route for further consultation with landowners.



Lune Valley Greenway - Project Updates for Stakeholders October 2023

Additional Updates

Meeting with David Morris MP

On the 5th September, Sustrans met with the MP for Morecambe and Lunesdale David Morris. Representatives from Yorkshire Dales National Park and Westmorland & Furness Council were also in attendance.

Sustrans briefed David on our current suite of Lune Valley projects that are aspiring to create new greenway routes. David was very supportive of Sustrans ambition given the clear benefits to all in the area, both in terms of local journeys and the tourism boost it would provide. David has significant experience in harnessing major funding having been involved in Eden Project North and offered to advise where he could on any future proposals for the Lune Valley.



Contact us

Please get in touch with Sustrans at englandnorth@sustrans.org.uk using the subject line Lune Valley Greenway if you would like to discuss any of the projects outlined in this newsletter further.

National Lottery Heritage Fund 'Three Counties One River' Bid

A new partnership has been set up to develop an ambitious scheme to conserve and celebrate the natural and cultural heritage of the central Lune valley area, which crosses the boundaries of Lancashire, Cumbria and North Yorkshire. The partnership currently comprises Yorkshire Dales Millennium Trust, Forest of Bowland AONB, Yorkshire Dales National Park Authority, Sustrans, Lune Rivers Trust, Lancaster City Council, Lancashire County Council, North Yorkshire Council, and Westmorland and Furness Council.

The partnership is seeking an initial pot of development funding to begin work on a suite of 18 interconnected projects that centre around the themes of connecting people through landscape, connecting nature, and connecting people to their heritage.

Working on the bid has been incredibly beneficial in strengthening our links with local partner organisations and will allow us to draw upon their expertise and local knowledge moving forward.

If you'd like to receive email updates on how the scheme is progressing please get in touch with The Yorkshire Dales Millennium Trust at the following email address:
don.gamble@ydmtd.org



Sharing the Lune Valley Greenway Vision

Sustrans are currently reviewing how we keep in touch with partners and stakeholders who are part of this ambitious and exciting project.

Over the coming months we will ask you, the stakeholders, how you would like to be informed and engaged with. This could include activities such as face-to-face meetings and workshops, newsletters and other online materials. Sustrans really value your input as stakeholders to ensure we keep working toward successful projects by achieving high levels of community support and maximising positive outcomes.